
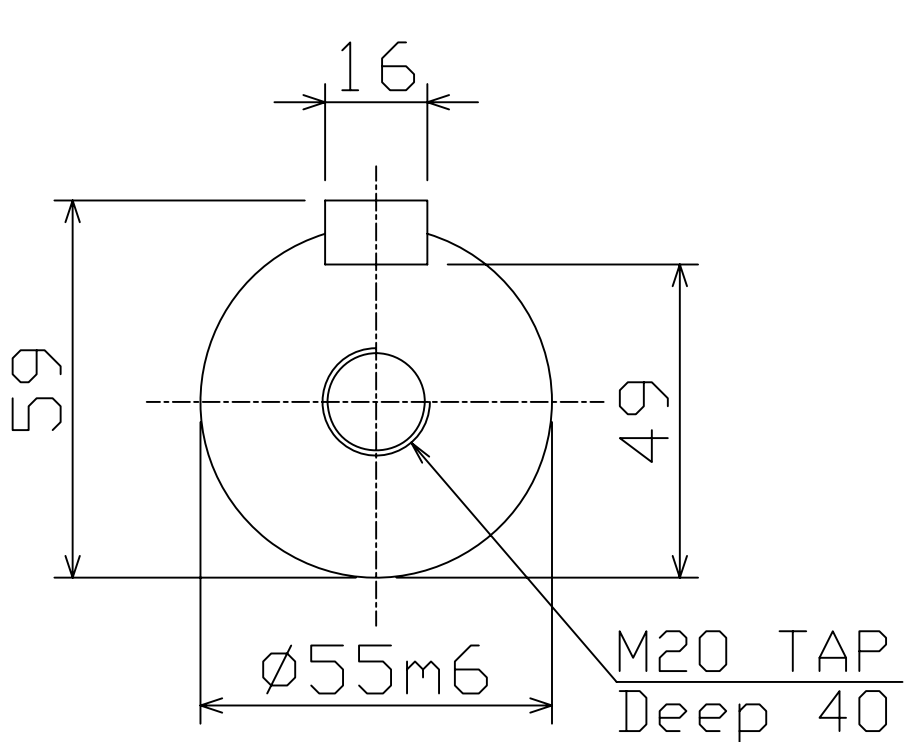
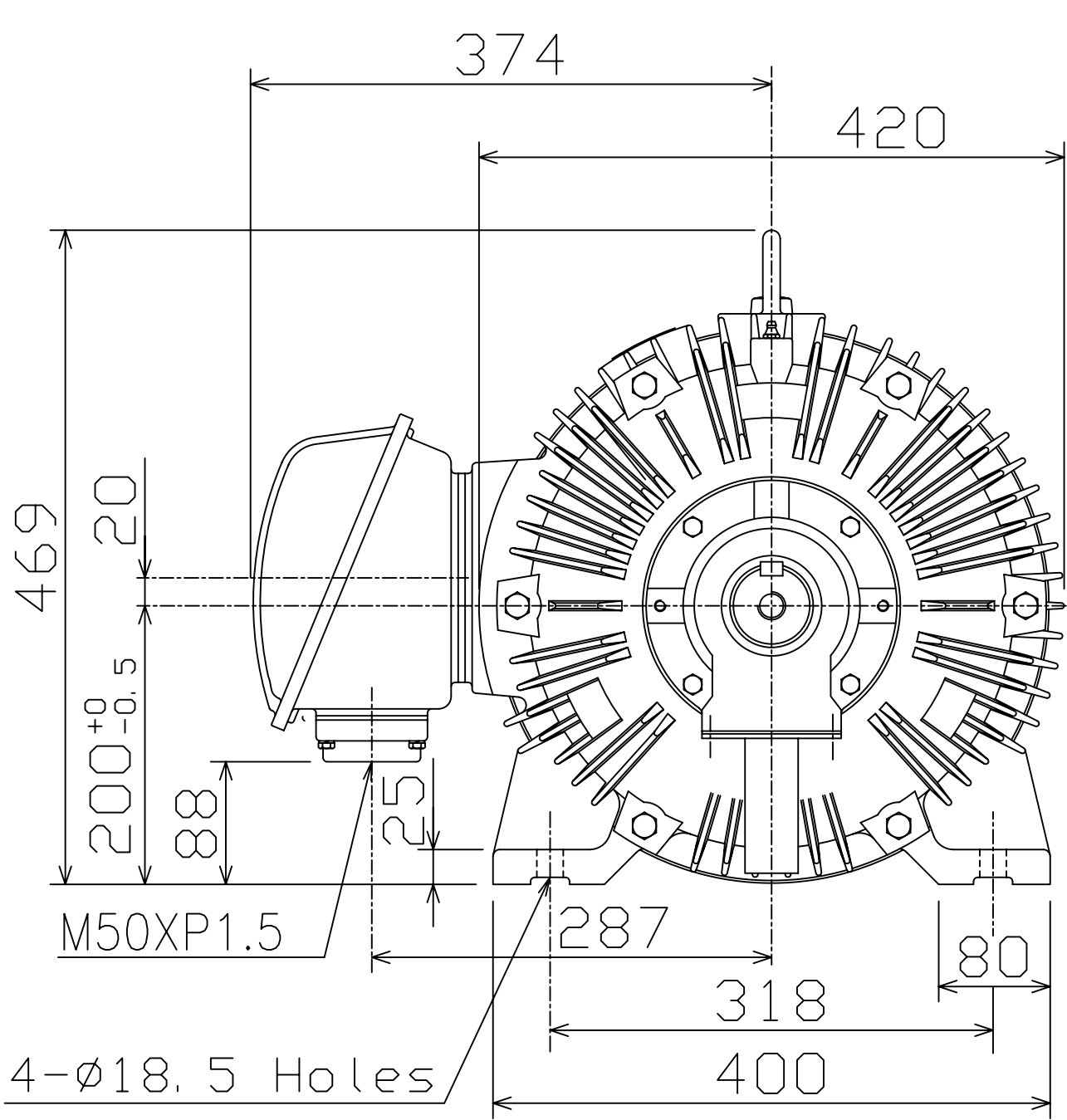
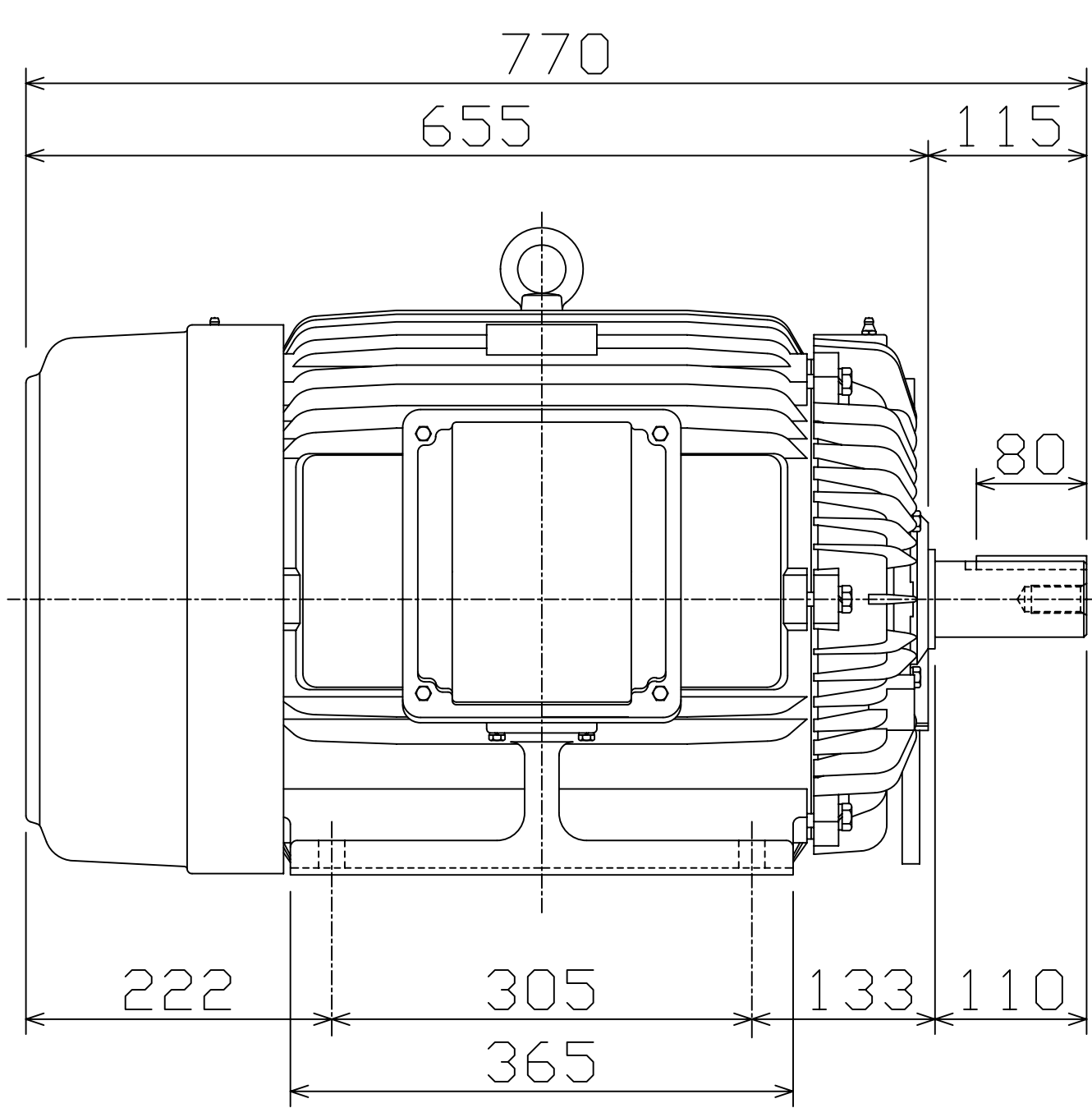


| | | |
|---|---|--|
| <div> <div>TECO</div>  </div> | <div> <div>OUTLINE DIMENSIONS</div> <div>3-PHASE INDUCTION MOTOR</div> </div> | <div> <div>FRAME NO :</div> <div>D200LC</div> </div> |
|---|---|--|


| POLES | KW | HP | SYNCH RPM |
|-------|---------|-------|-----------|
| 4 | 30 | 40 | 1500 |
| 6 | 18.5/22 | 25/30 | 1000 |
| 8 | 15 | 20 | 750 |
| | | | |
| | | | |

Totally Enclosed Fan-Cooled Type, Squirrel-Cage Rotor.



- NOTES:
1. FOOT MOUNTED IM1001.
 2. TYPICAL DIMENSIONS ONLY FOR CERTIFIED DIMENSIONS REFER TO TECO.
 3. FOR BELT OR DIRECT DRIVE.

FOR MAXe3MINING AND
AND MAXe3PREMIUM SEVERE DUTY

| | | | | |
|---|----|------------|---|----------|
|  | | | | |
| DWN. | EJ | 01. 12. 15 | 東元電機股份有限公司 TECO ELEC. & MACH. CO., LTD. TAIWAN R. O. C. | REV : 00 |
| CHKD. | DK | 01. 12. 15 | | |
| APPD. | JF | 01. 12. 15 | | |