



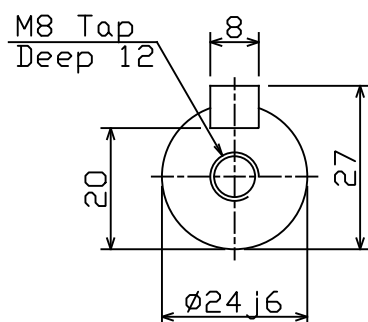
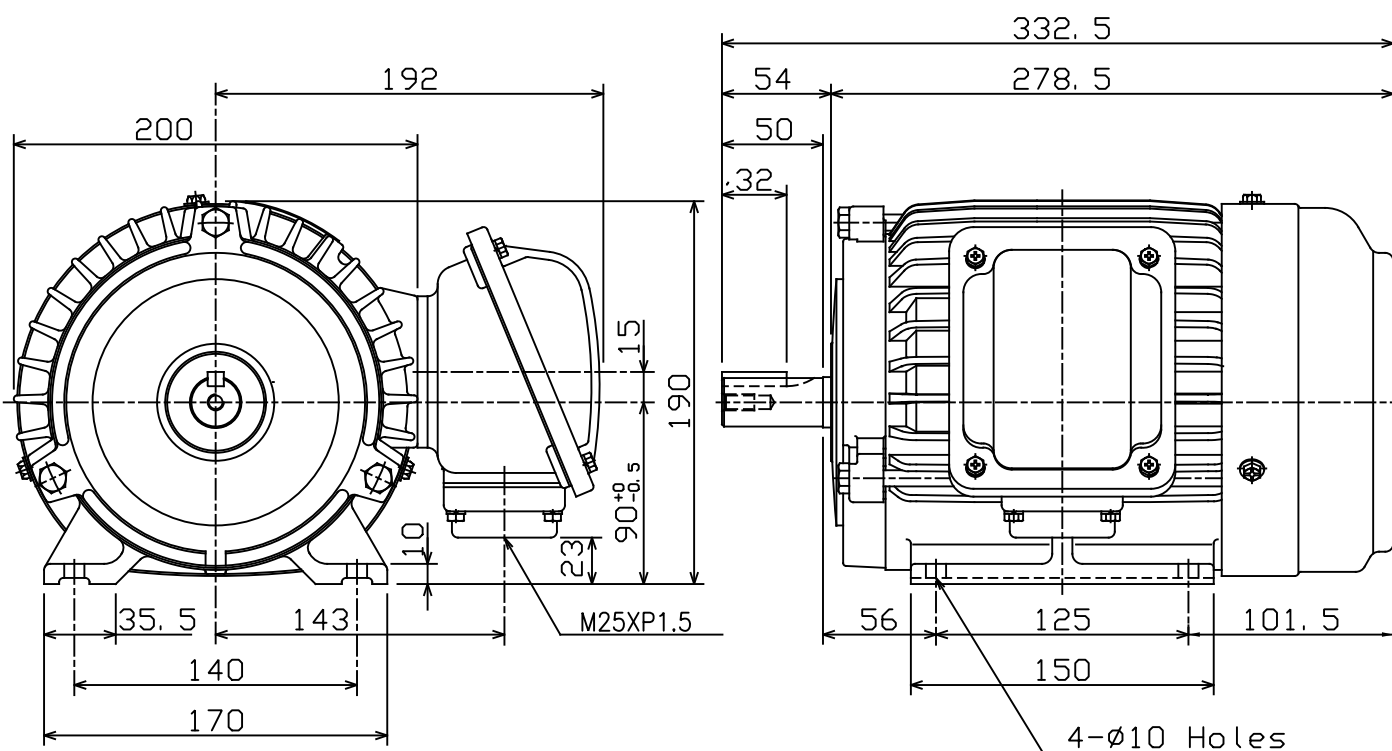
OUTLINE DIMENSIONS 3-PHASE INDUCTION MOTOR

FRAME NO :

D90L

| POLES | KW | HP | SYNCH RPM |
|-------|------|------|-----------|
| 2 | 2.2 | 3 | 3000 |
| 4 | 1.5 | 2 | 1500 |
| 6 | 1.1 | 1.5 | 1000 |
| 8 | 0.55 | 0.75 | 750 |
| | | | |

Totally Enclosed Fan-Cooled Type, Squirrel-Cage Rotor.



NOTES:

1. FOOT MOUNTED IM1001.
2. TYPICAL DIMENSIONS ONLY FOR CERTIFIED DIMENSIONS REFER TO TECO.
3. FOR BELT OR DIRECT DRIVE.

FOR MAXE3MINING AND
AND MAXE3PREMIUM SEVERE DUTY



| | | |
|-------|----|------------|
| DWN. | EJ | 01. 12. 15 |
| CHKD. | DK | 01. 12. 15 |
| APPD. | JF | 01. 12. 15 |

東元電機股份有限公司
TECO ELEC. & MACH. CO., LTD.
TAIWAN R. O. C.

REV : 00