



# OUTLINE DIMENSIONS 3-PHASE INDUCTION MOTOR

FRAME NO :

D80

POLES

KW

HP

SYNCH RPM

2

0.75, 1.1

1, 1.5

3000

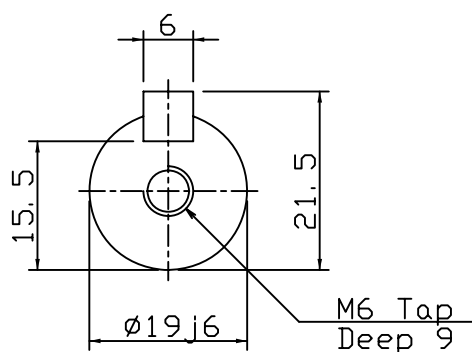
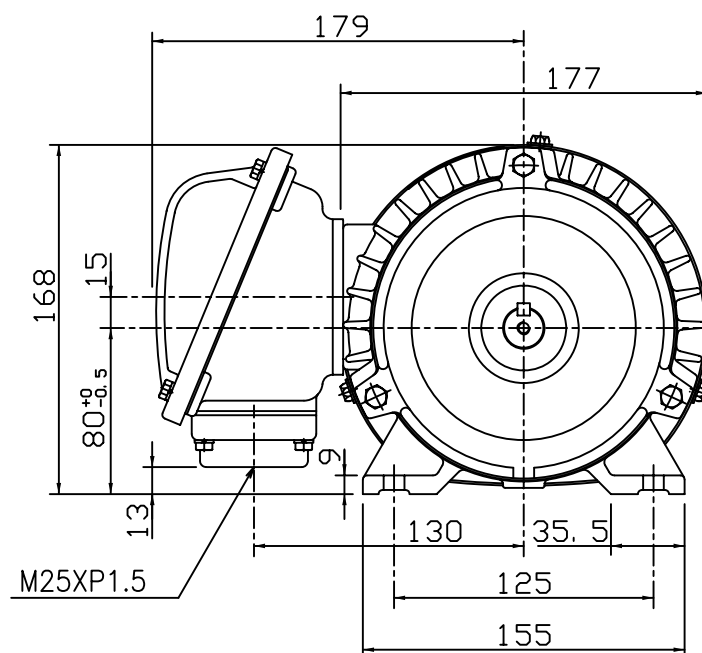
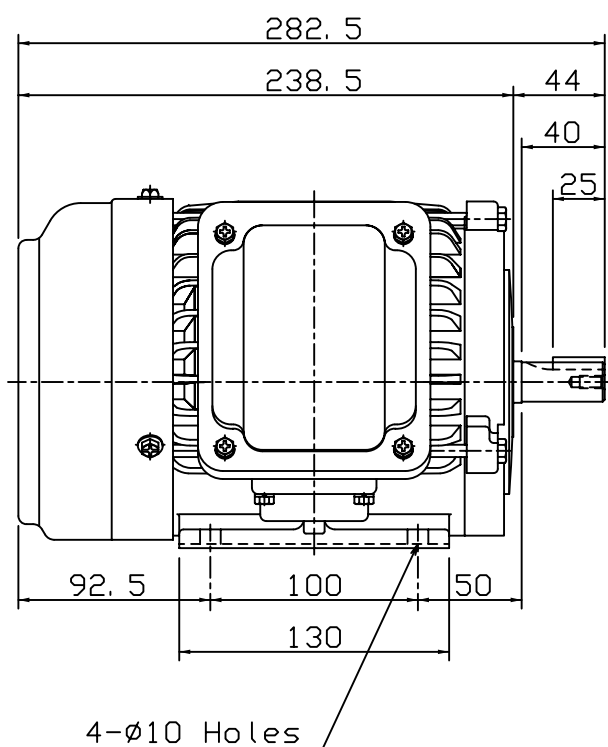
4

0.75

1

1500

Totally Enclosed Fan-Cooled Type, Squirrel-Cage Rotor.



## NOTES:

1. FOOT MOUNTED IM1001.
2. TYPICAL DIMENSIONS ONLY  
FOR CERTIFIED DIMENSIONS  
REFER TO TECO.
3. FOR BELT OR DIRECT DRIVE.

FOR MAXe3MINING AND  
AND MAXe3PREMIUM SEVERE DUTY

DWN.	EJ	01. 12. 15
CHKD.	DK	01. 12. 15
APPD.	JF	01. 12. 15

東元電機股份有限公司  
TECO ELEC. & MACH. CO., LTD.  
TAIWAN R. O. C.

REV : 00