



OUTLINE DIMENSIONS  
1-PHASE INDUCTION MOTOR

FRAME :

B56

POLES

KW

HP

SYNCH RPM

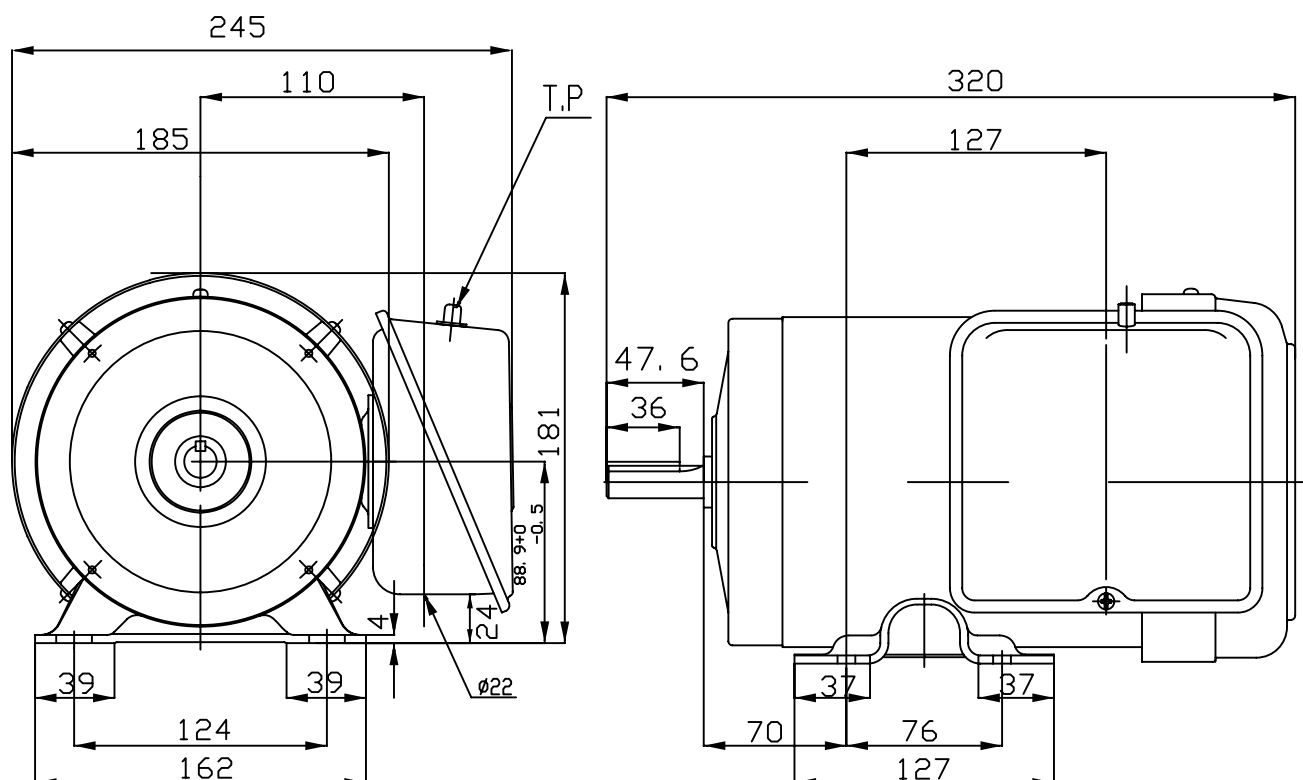
4

0.25/0.37

0.33/0.50

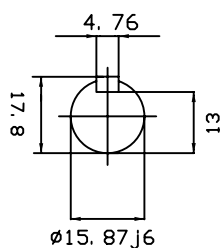
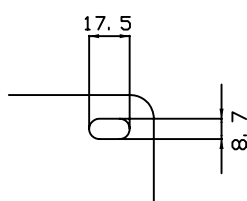
1500

Totally Enclosed Fan Cooled Capacitor-Start Induction Run Type  
Squirrel-Cage Rotor



NOTES:

- 1.FOOT MOUNTED IM1001.
- 2.TYPICAL DIMENSIONS ONLY  
FOR CERTIFIED DIMENSIONS  
REFER TO TECO.
- 3.FOR BELT OR DIRECT DRIVE.



DWN.	EJ	01.10.09
CHKD.	DK	01.10.09
APPD.	JF	01.10.09

東元電機股份有限公司  
TECO Electric & Machinery Co., Ltd.  
TAIWAN

DWG NO.

0.25BB4  
0.37BB4