



OUTLINE DIMENSIONS
1-PHASE INDUCTION MOTOR

FRAME :

D80

POLES

KW

HP

SYNCH RPM

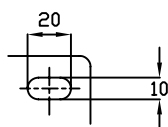
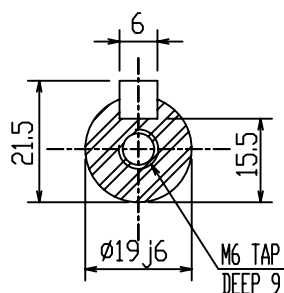
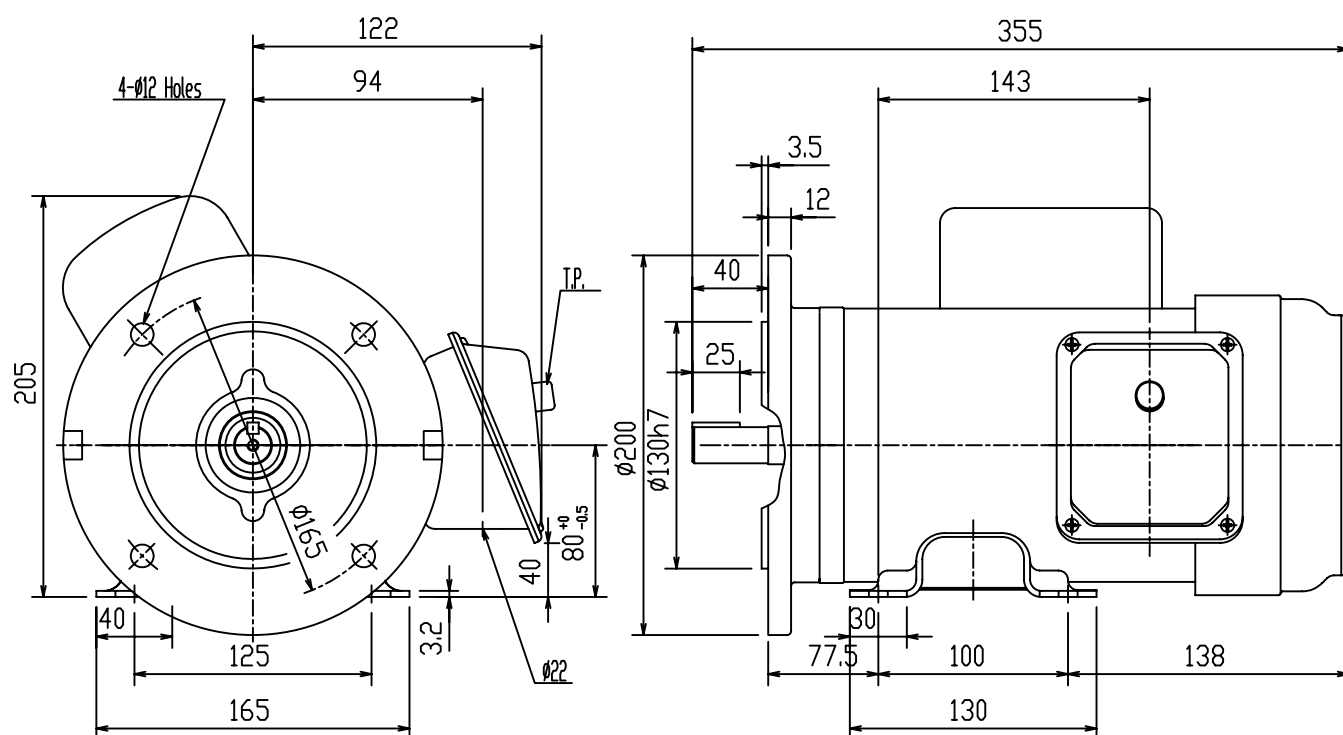
4

0.75

1

1500

Totally Enclosed Fan Cooled Capacitor-Start & Run Type.
Squirrel-Cage Rotor



NOTES:

- 1.FOOT&FLANGE MOUNTED IM2001.
- 2.TYPICAL DIMENSIONS ONLY
FOR CERTIFIED DIMENSIONS
REFER TO TECO.
- 3.FOR BELT OR DIRECT DRIVE.

DWN.	EJ	01.10.09
CHKD.	DK	01.10.09
APPD.	JF	01.10.09

東元電機股份有限公司
TECO Electric & Machinery Co., Ltd.
TAIWAN

DWG NO. 0.75BF4