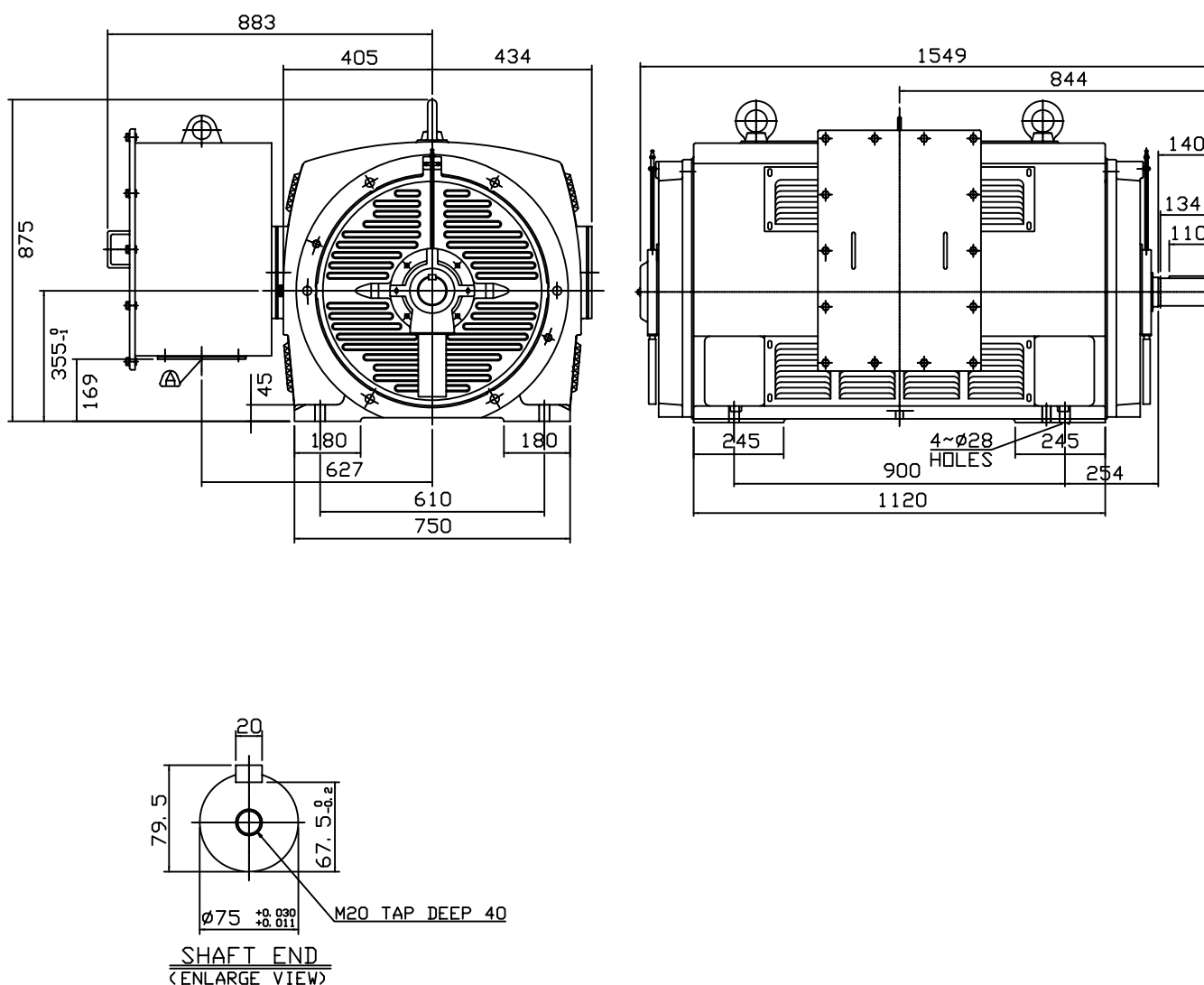


POLES	KW	HP	SYNCH RPM
2	465	620	3000
2	700	935	3000

Open Drip-proof Type Squirrel-Cage Rotor.



NOTES:

1. FOOT MOUNTED IM1001.
2. TYPICAL DIMENSIONS ONLY  
FOR CERTIFIED DIMENSIONS  
REFER TO TECO.
3. FOR DIRECT DRIVE.

DIMENSIONS IN MM

DWN.	EJ	01. 10. 09	東元電機股份有限公司 TECO ELEC. & MACH. CO., LTD. TAIWAN R. O. C.	DWG NO.	465C2R
CHKD.	DK	01. 10. 09		700C2NR	
APPD.	JF	01. 10. 09		REV : 00	