



# OUTLINE DIMENSIONS 3-PHASE INDUCTION MOTOR

FRAME NO :

C355AA

POLES

2

KW

335/375

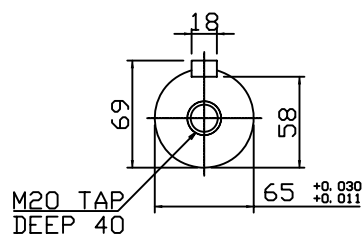
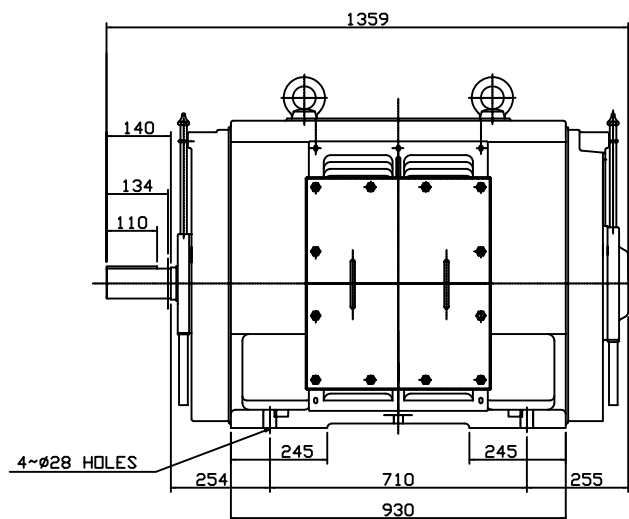
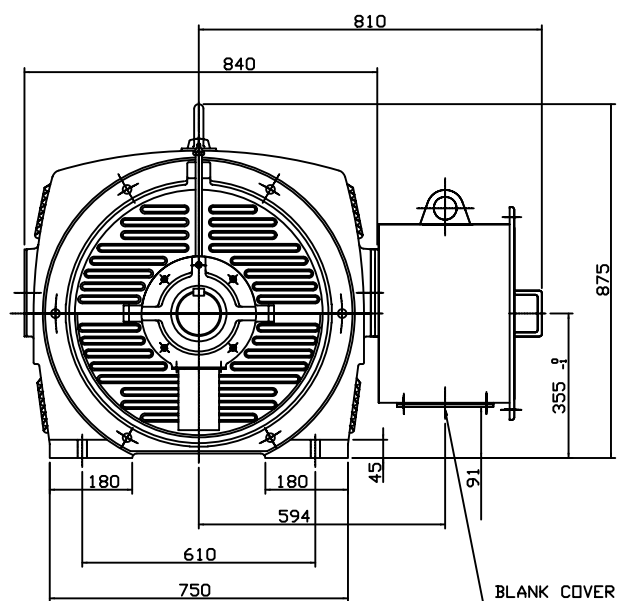
HP

450/500

SYNCH RPM

3000

Open Drip-proof Type Squirrel-Cage Rotor.



## NOTES:

1. FOOT MOUNTED IM1001.
2. TYPICAL DIMENSIONS ONLY  
FOR CERTIFIED DIMENSIONS  
REFER TO TECO.
3. FOR DIRECT DRIVE.

DIMENSIONS IN MM

DWN.	EJ	01. 10. 09
CHKD.	DK	01. 10. 09
APPD.	JF	01. 10. 09

東元電機股份有限公司  
TECO ELEC. & MACH. CO., LTD.  
TAIWAN R. O. C.

DWG NO. 335C2R  
375C2R  
REV : 00