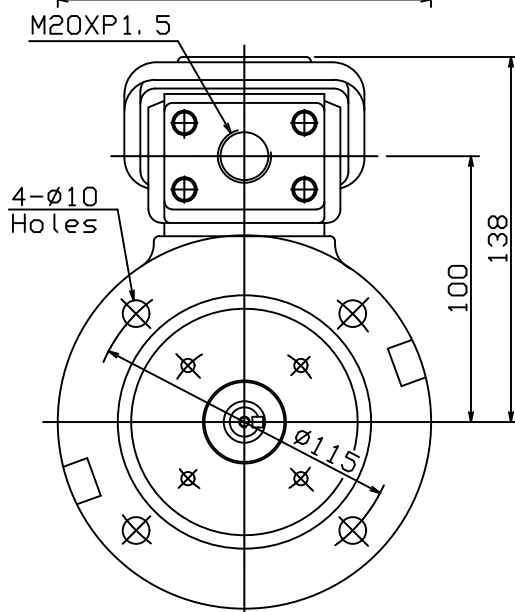
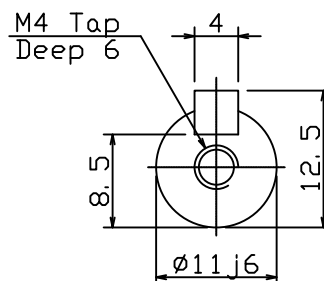
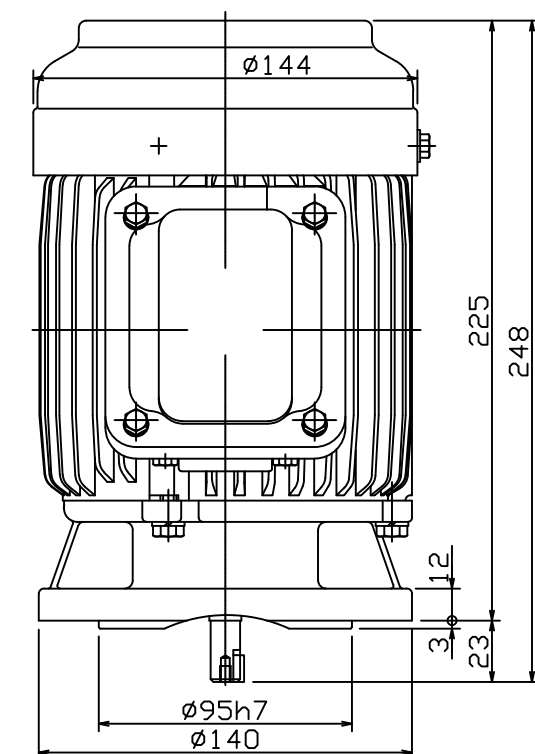


|   |   |                   |
|---|---|-------------------|
|  | OUTLINE DIMENSIONS<br>3-PHASE INDUCTION MOTOR | FRAME NO :<br>D63 |
|---|---|-------------------|

| POLES | KW   | HP   | SYNCH RPM |
|-------|------|------|-----------|
| 2     | 0.18 | 0.25 | 3000      |
| 4     | 0.18 | 0.25 | 1500      |
|       |      |      |           |
|       |      |      |           |

Totally Enclosed Fan-Cooled Type, Squirrel-Cage Rotor.



# NOTES:

1. FLANGE MOUNTED IM3001.
2. TYPICAL DIMENSIONS ONLY FOR CERTIFIED DIMENSIONS REFER TO TECO.
3. FOR BELT OR DIRECT DRIVE.

FOR MAXe3MINING AND  
MAXe3PREMIUM SEVERE DUTY

|       |    |            |   |          |
|-------|----|------------|---|----------|
| DWN.  | EJ | 01. 12. 15 | 東元電機股份有限公司<br>TECO ELEC. & MACH. CO., LTD.<br>TAIWAN R. O. C. | REV : 00 |
| CHKD. | DK | 01. 12. 15 |   |          |
| APPD. | JF | 01. 12. 15 |   |          |