

<div> <div>Te3</div> </div>	<div> <div>OUTLINE DIMENSIONS</div> <div>3-PHASE INDUCTION MOTOR</div> </div>	MODEL

MODEL

TYPE	OUTPUT (kW)	POLES	Hz	SYN R.P.M
TE3-180M-2	22	2	50	3000
TE3-180M-4	18.5	4	50	1500

TOTAL ENCLOSED FAN-COOLED TYPE
SQUIRREL-CAGE ROTOR

Technical drawing of a squirrel-cage motor, showing three views: a side view, a top view, and a detail view of the terminal box.

Side View Dimensions:

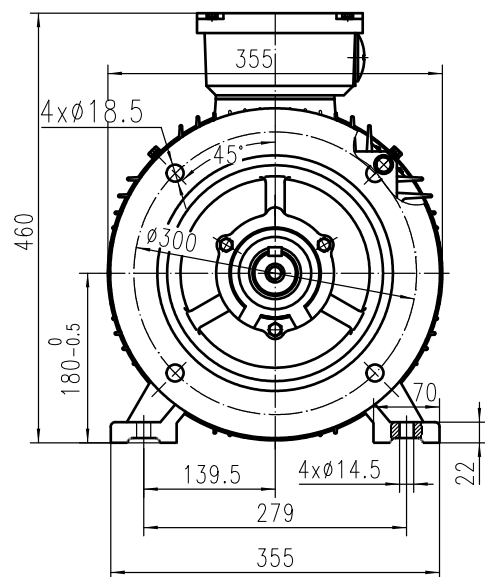
- Total width: 680
- Total height: 417
- Motor body width: 311
- Motor body height: 229
- Terminal box width: 161
- Terminal box height: 28
- Terminal box mounting holes: M20x1.5
- Motor body mounting holes: M40x1.5
- Motor body mounting flange: Ø250
- Motor body mounting flange thickness: 80
- Motor body mounting flange hole: Ø48
- Motor body mounting flange hole offset: 110
- Motor body mounting flange hole offset: 5
- Motor body mounting flange hole offset: 17
- Motor body mounting flange hole offset: 121
- Motor body mounting flange hole offset: 241

Top View Dimensions:

- Total width: 355
- Total height: 460
- Motor body diameter: Ø300
- Motor body mounting holes: 4xØ18.5
- Motor body mounting holes: 4xØ14.5
- Motor body mounting holes: 139.5
- Motor body mounting holes: 279
- Motor body mounting holes: 180-0.5
- Motor body mounting holes: 70
- Motor body mounting holes: 22

Detail View Dimensions:

- Terminal box mounting hole: M16x36
- Terminal box mounting hole: Ø48
- Terminal box mounting hole: 14
- Terminal box mounting hole: 9
- Terminal box mounting hole: 42.5



DRAWN		
CHECK		
APP'D		

APP'D

TECO AUSTRALIA PTY.LTD

2019.7

(B35)