
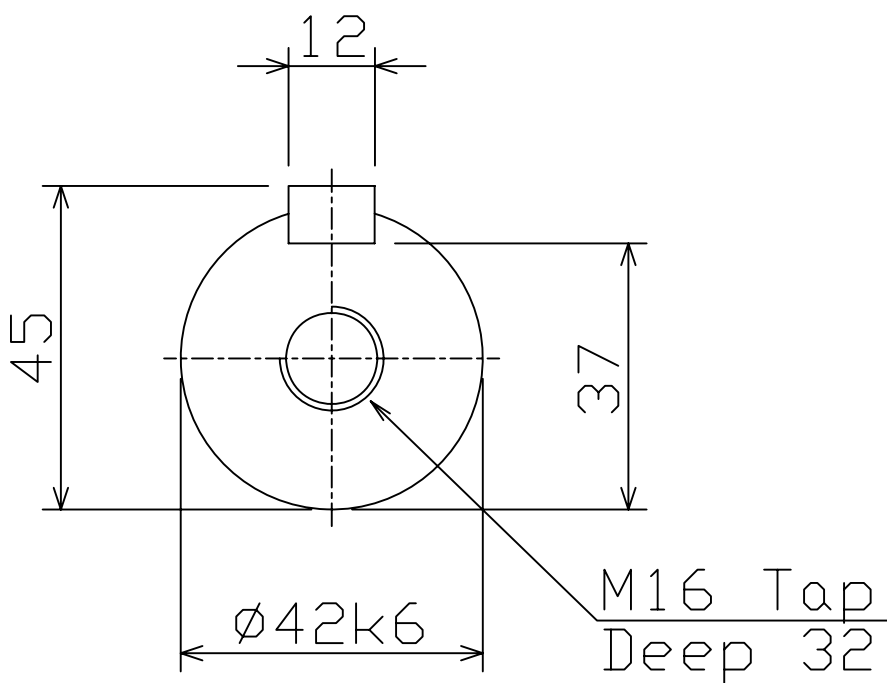
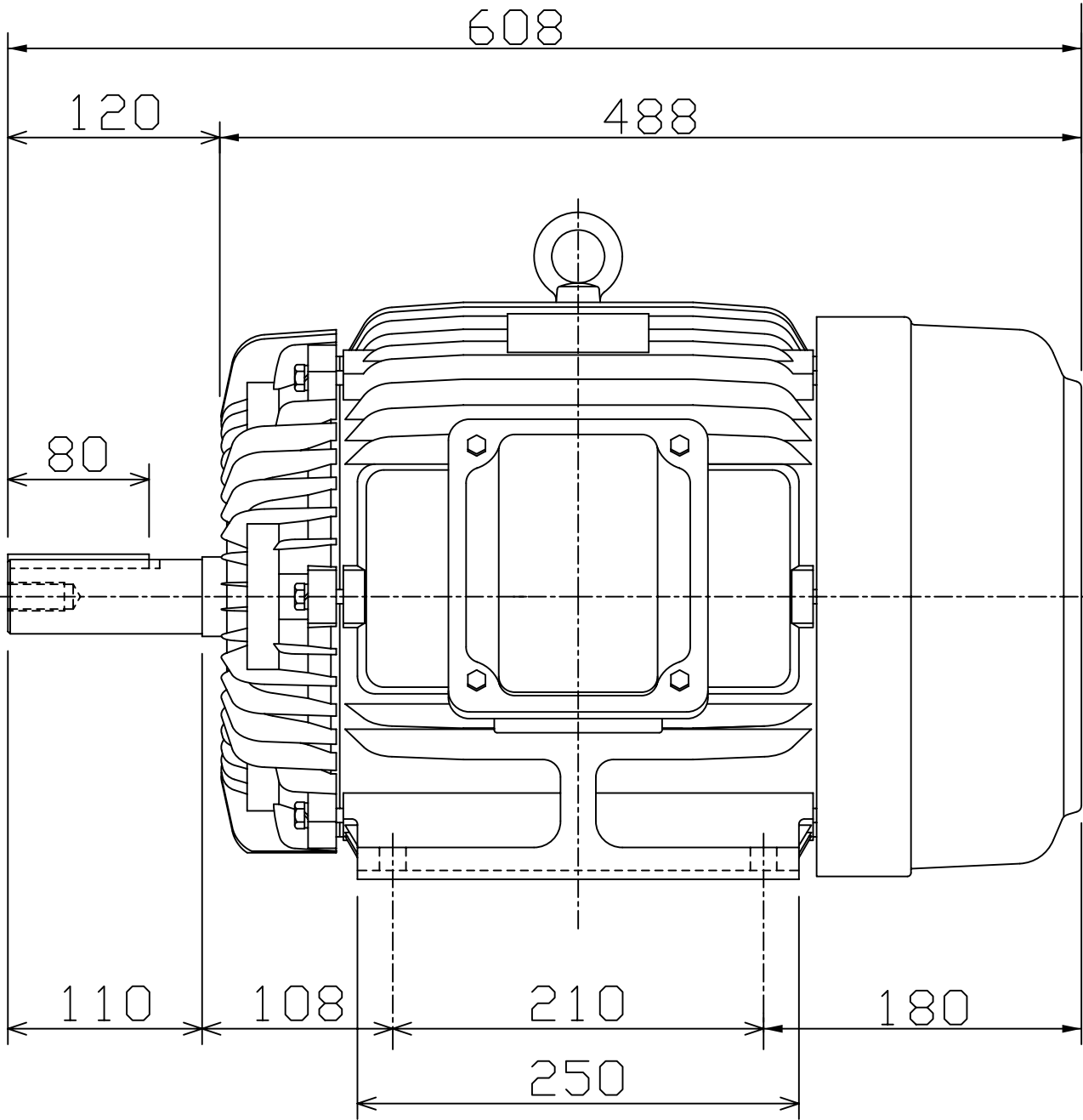
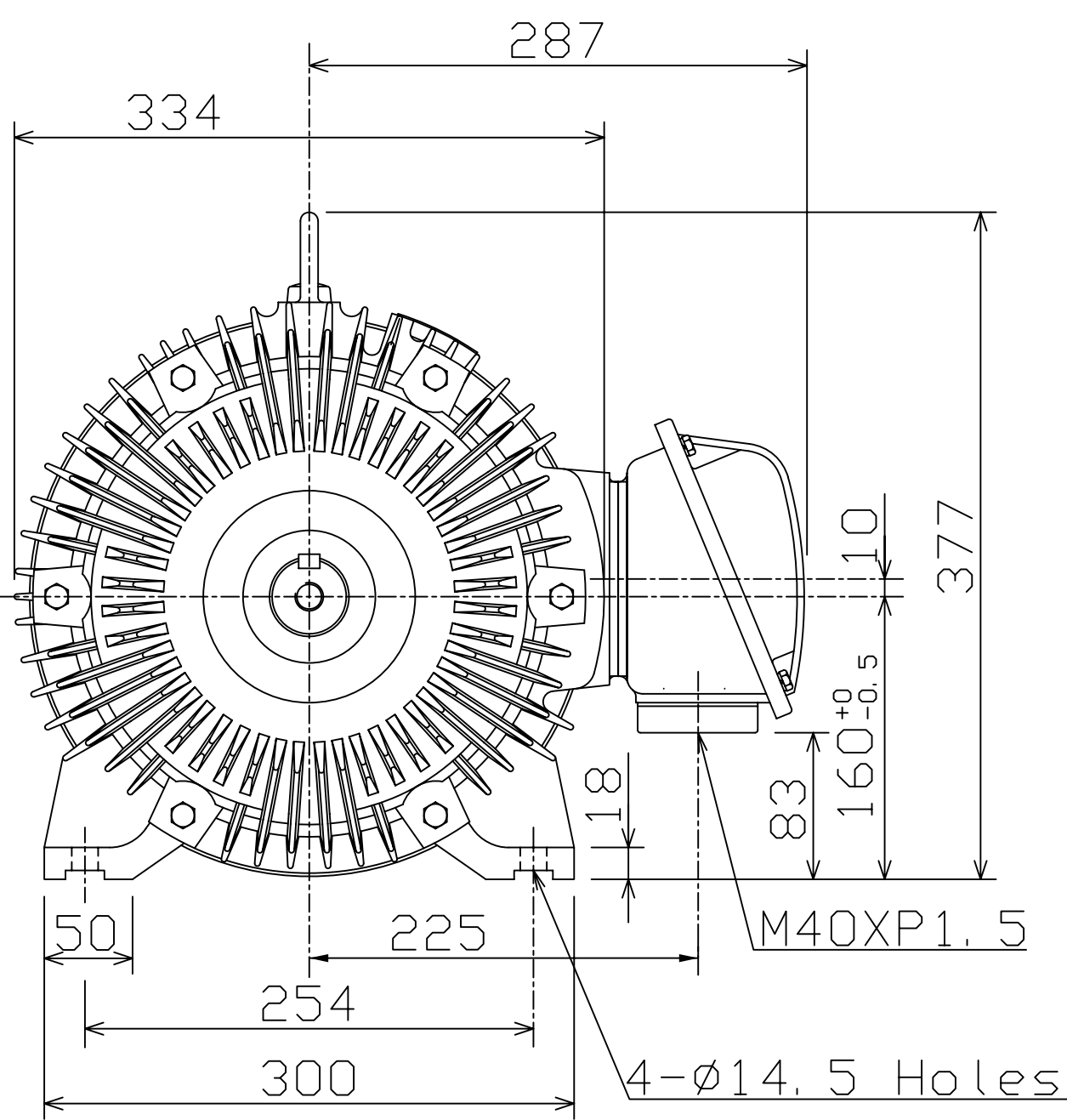


<div> <div>TECO</div>  </div>	<div> <div>OUTLINE DIMENSIONS</div> <div>3-PHASE INDUCTION MOTOR</div> </div>	<div> <div>FRAME NO :</div> <div>D160M</div> </div>
---------------------------------------------------------------------------------------------------------------	-------------------------------------------------------------------------------	-----------------------------------------------------


POLES	KW	HP	SYNCH RPM
2	11/15	15/20	3000
4	11	15	1500
6	7.5	10	1000
8	4/5.5	5.5/7.5	750

Totally Enclosed Fan-Cooled Type, Squirrel-Cage Rotor.



- NOTES:
1. FOOT MOUNTED IM1001.
 2. TYPICAL DIMENSIONS ONLY FOR CERTIFIED DIMENSIONS REFER TO TECO.
 3. FOR BELT OR DIRECT DRIVE.

FOR MAXe3MINING AND
AND MAXe3PREMIUM SEVERE DUTY

			
DWN.	EJ	01. 12. 15	東元電機股份有限公司 TECO ELEC. & MACH. CO., LTD. TAIWAN R. O. C.
CHKD.	DK	01. 12. 15	
APPD.	JF	01. 12. 15	
			REV : 00