

TECO

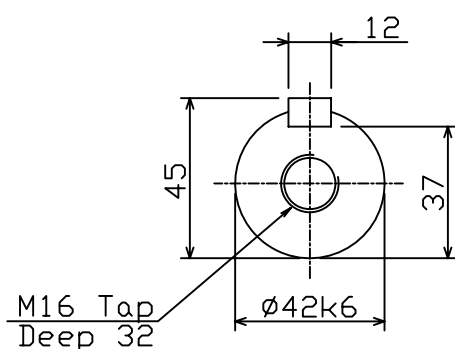
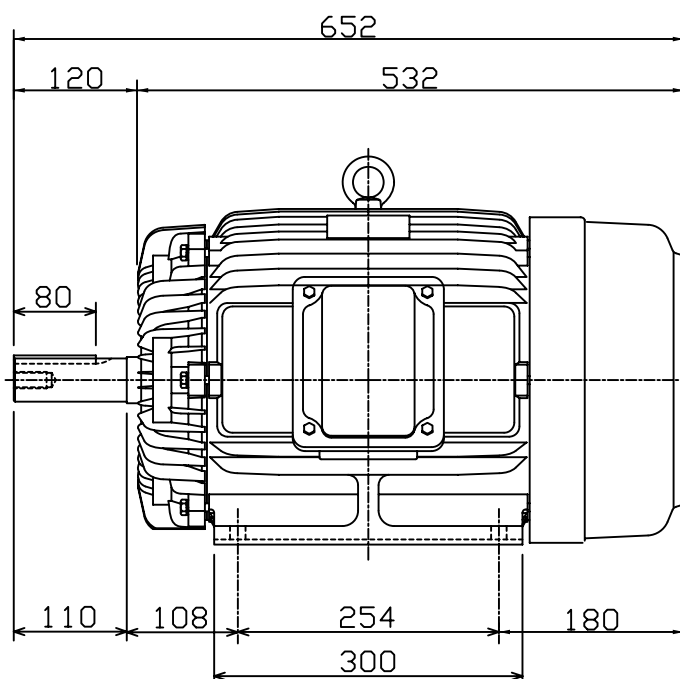
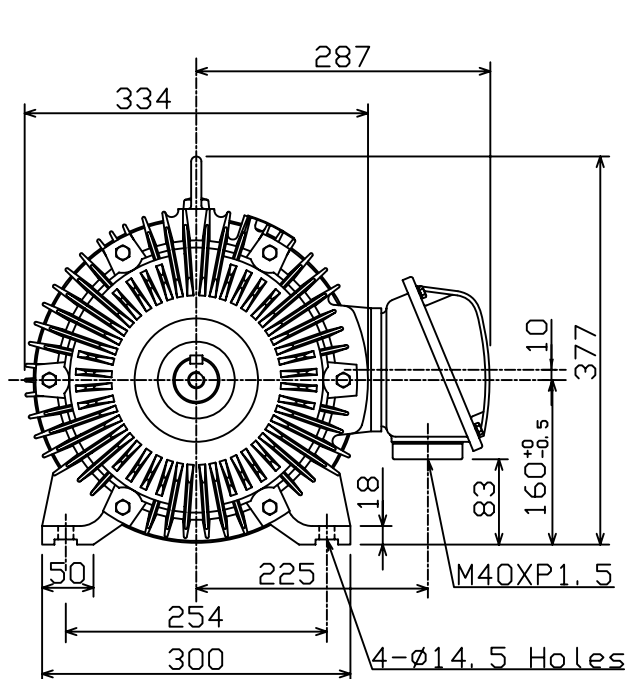
# OUTLINE DIMENSIONS 3-PHASE INDUCTION MOTOR

FRAME NO :

D160L

POLES	KW	HP	SYNCH RPM
2	18.5	25	3000
4	15	20	1500
6	11	15	1000
8	7.5	10	750

Totally Enclosed Fan-Cooled Type, Squirrel-Cage Rotor.



## NOTES:

1. FOOT MOUNTED IM1001.
2. TYPICAL DIMENSIONS ONLY FOR CERTIFIED DIMENSIONS REFER TO TECO.
3. FOR BELT OR DIRECT DRIVE.

FOR MAXe3MINING AND  
AND MAXe3PREMIUM SEVERE DUTY

◇			
DWN.	EJ	01. 12. 15	<p>東元電機股份有限公司 TECO ELEC. &amp; MACH. CO., LTD. TAIWAN R. O. C.</p>
CHKD.	DK	01. 12. 15	
APPD.	JF	01. 12. 15	
			REV : 00