



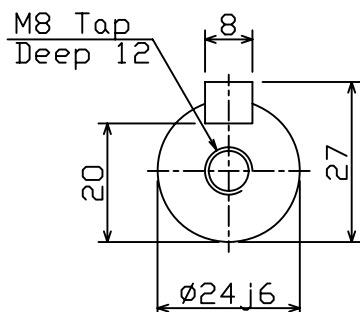
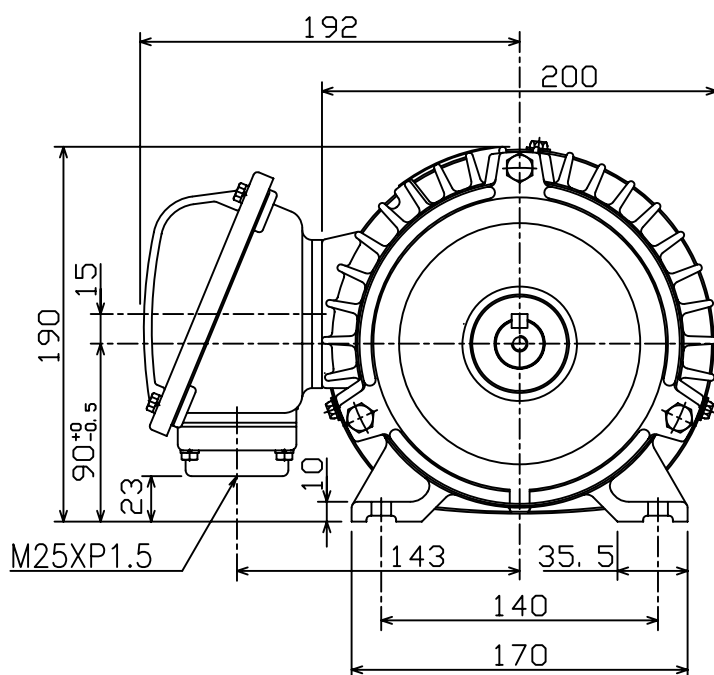
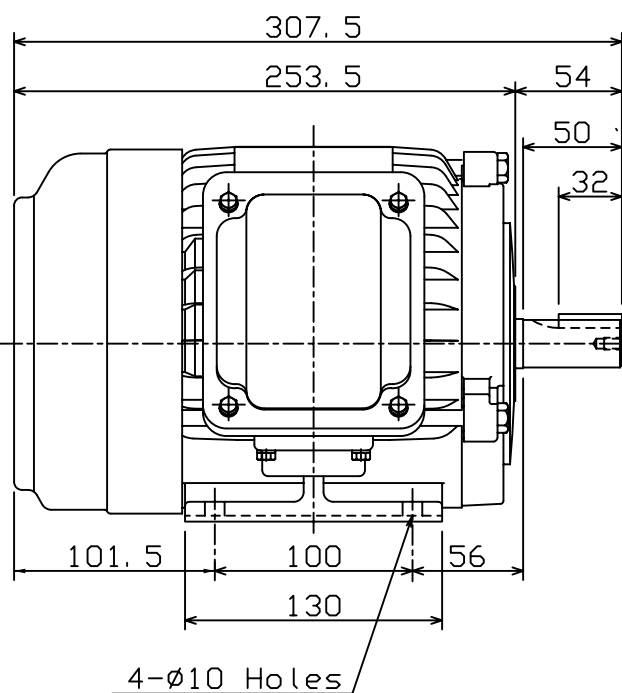
OUTLINE DIMENSIONS 3-PHASE INDUCTION MOTOR

FRAME NO :

D90S

POLES	KW	HP	SYNCH RPM
2	1.5	2	3000
4	1.1	1.5	1500
6	0.75	1	1000
8	0.37	0.5	750

Totally Enclosed Fan-Cooled Type, Squirrel-Cage Rotor.



NOTES:

1. FOOT MOUNTED IM1001.
2. TYPICAL DIMENSIONS ONLY
FOR CERTIFIED DIMENSIONS
REFER TO TECO.
3. FOR BELT OR DIRECT DRIVE.

FOR MAXe3MINING AND
AND MAXe3PREMIUM SEVERE DUTY

◇			
DWN.	EJ	01. 12. 15	東元電機股份有限公司 TECO ELEC. & MACH. CO., LTD. TAIWAN R. O. C.
CHKD.	DK	01. 12. 15	
APPD.	JF	01. 12. 15	
			REV : 00