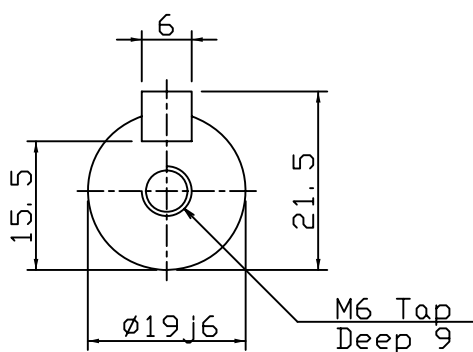
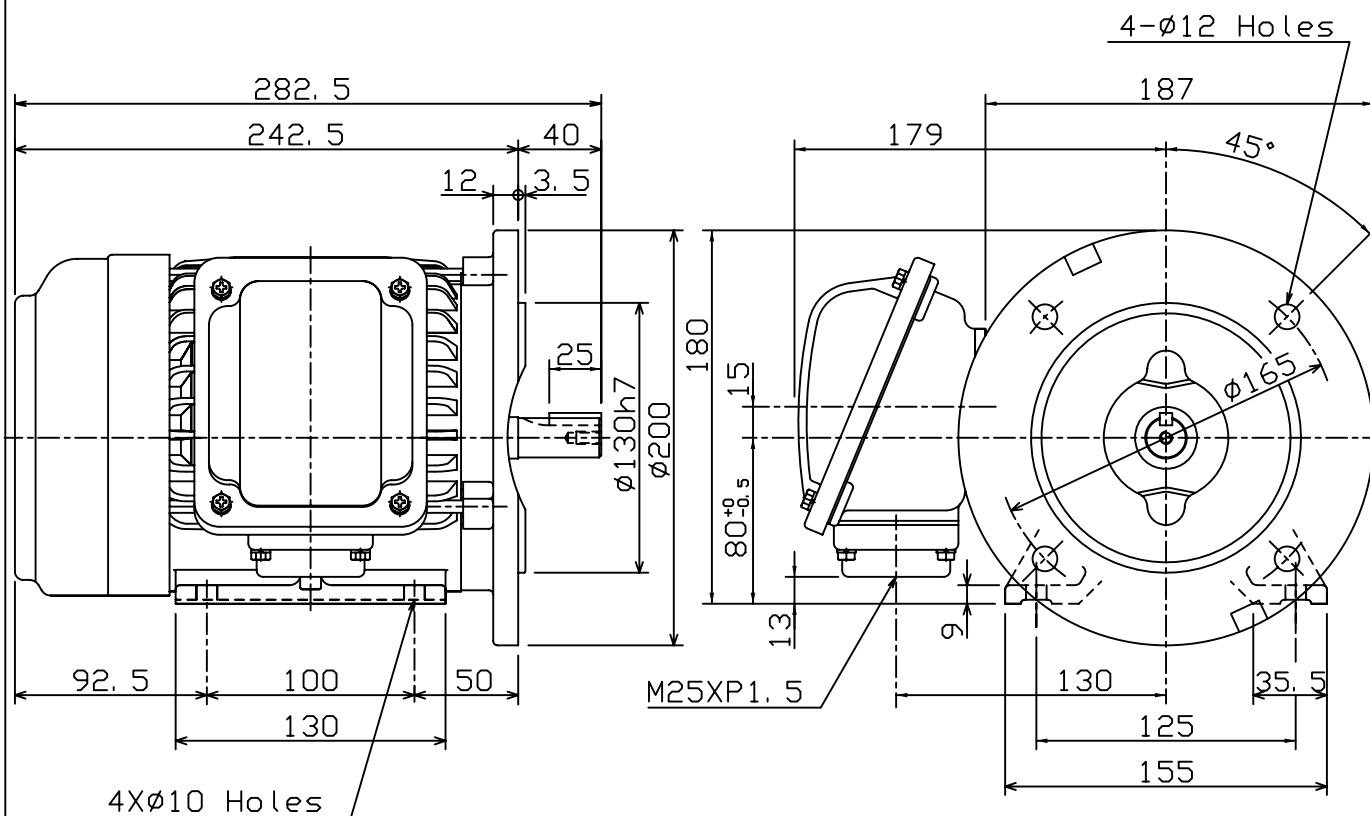


POLES	KW	HP	SYNCH RPM
2	0. 75, 1. 1	1, 1. 5	3000
4	0. 75	1	1500

Totally Enclosed Fan-Cooled Type, Squirrel-Cage Rotor.



NOTES:

1. FOOT&FLANGE MOUNTED IM2001.
2. TYPICAL DIMENSIONS ONLY
FOR CERTIFIED DIMENSIONS
REFER TO TECO.
3. FOR BELT OR DIRECT DRIVE.

FOR MAXe3MINING AND
AND MAXe3PREMIUM SEVERE DUTY

DWN.		EJ	01. 12. 15	東元電機股份有限公司 TECO ELEC. & MACH. CO., LTD. TAIWAN R. O. C.	REV : 00
CHKD.		DK	01. 12. 15		
APPD.		JF	01. 12. 15		