

TECO

OUTLINE DIMENSIONS 3-PHASE INDUCTION MOTOR

FRAME NO :

C250MC

POLES

KW

HP

SYNCH RPM

4

90

125

1500

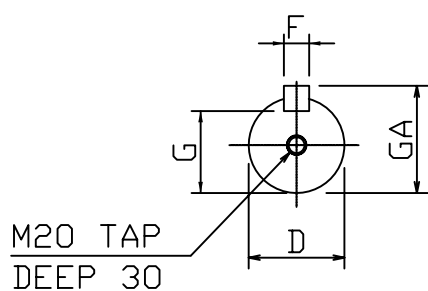
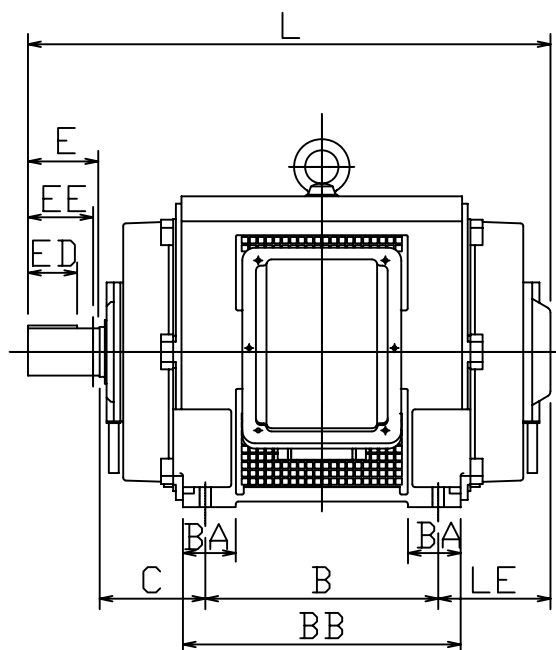
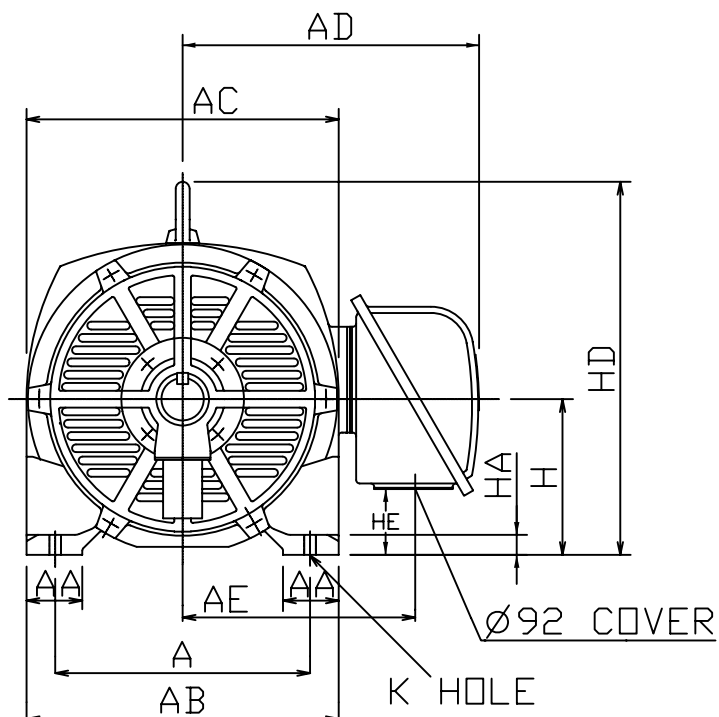
6

55

75

1000

Open Drip-proof Type Squirrel-Cage Rotor.



NOTES:

1. FOOT MOUNTED IM1001.
2. TYPICAL DIMENSIONS ONLY FOR CERTIFIED DIMENSIONS REFER TO TECO.
3. FOR DIRECT DRIVE.

DIMENSIONS IN MM

FRAME NO.		A	AA	AB	AC	AD	AE	B	BA	BB	C	D
C250MC		406	95	500	500	490	375	349	—	410	168	75
E	ED	EE	F	G	GA	H	HA	HD	HE	K	L	LE
140	110	—	20	67.5	79.5	250	32	574	71	24	819	162

DWN.	EJ	01. 10. 09	<p>東元電機股份有限公司 TECO ELEC. & MACH. CO., LTD. TAIWAN R. O. C.</p>	DWG NO.	<p>90C4 55C6</p>
CHKD.	DK	01. 10. 09		REV :	
APPD.	JF	01. 10. 09			